

INTRA-LOCK[®]
SYSTEM EUROPA



m



mini Implant



MI Mini Implant

The Mini Implants of Intra-Lock System Europa have been designed for the anatomical and physiological needs of the stabilization of the mandibular and maxillary prosthesis, as well as for the rehabilitation of lateral agenesis, thanks to the use of cementable abutments.

The abutments fit perfectly into the square base that supports the O-Ball, transforming the implant for use from a mobile to a fixed prosthesis.

**TITANIUM GRADE 5 EXTRA STRONG
TO RESIST HIGH
INSERTION TORQUE**

**SMOOTH AND FLARED NECK TO
IMPROVE THE GINGIVAL ATTACHMENT**

- DISPLAY OF THE DEPTH STOP
- INNOVATIVE DESIGN TO OBTAIN PERFECT PRIMARY STABILITY WITH SELF-TAPPING COILSE
- SHARP APICAL GUIDE WITH SELF-PERFORATING TIP

FHS FAST HEALING SURFACE

THE SPEED OF SURFACE HEALING

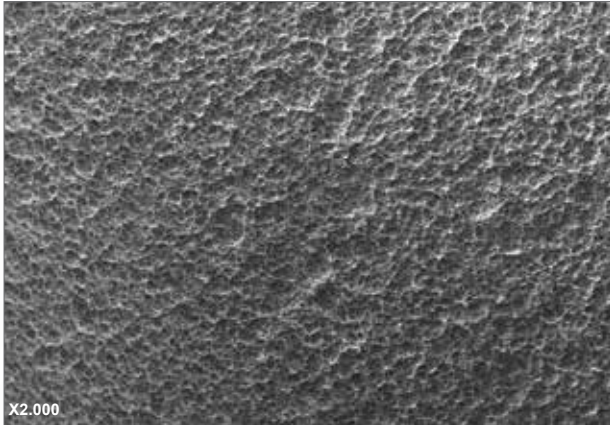


Fig.1 - SEM enlargement that highlight the micro-roughness of the surface

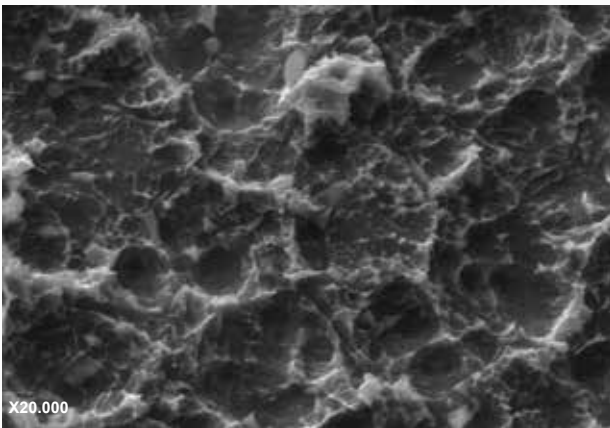


Fig.2 - SEM enlargement that highlight the micro-roughness of the surface



Fig.3 - Superficial topography by SEM that highlight the clean surface without residues.

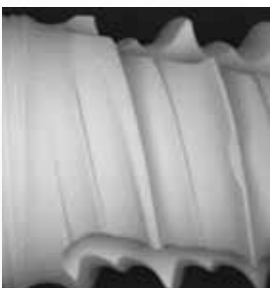


Fig.4

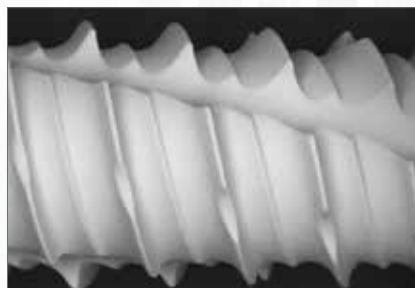


Fig.5



Fig.6

SURFACE TREATMENT

The FHS surface is obtained with a long range roughness sandblasting process to which a short range roughness is superimposed due to the double acidification treatment. This allows to obtain a homogeneous surface micro-roughness on the whole implant surface (Fig. 1 and 2).

DECONTAMINATION OF THE COLD PLASMA SURFACE

This “sponge” topography offers an ideal structure for the adhesion of growth factors, accelerating osseointegration times.

After the surface treatments, the implants are subjected to an accurate decontamination process using cold plasma triggered by Argon GDT (Glow discharge treatment). The GDT causes the removal of any organic contaminants without leaving residues (see Fig. 3,4,5 and 6). This “atomic sandblasting” activating the ionization of the most superficial atoms of titanium oxide increases the surface energy and wettability of the fixture.

Images by Nobil Bio Searches



MI-2013

2.0mmØ Mini Implant

Lenght	Active Lenght	Product Description	Code
10mm	8mm	Mini Implant, Ø2.0mm	MI-2010
11,5mm	9,5mm	Mini Implant, Ø2.0mm	MI-2011
13mm	11mm	Mini Implant, Ø2.0mm	MI-2013
15mm	13mm	Mini Implant, Ø2.0mm	MI-2015

Note: The packages do not include the metal box with o'ring which can be ordered separately



MI-2513

2.5mmØ Mini Implant

Lenght	Active Lenght	Product Description	Code
10mm	8mm	Mini Implant, Ø2.5mm	MI-2510
11,5mm	9,5mm	Mini Implant, Ø2.5mm	MI-2511
13mm	11mm	Mini Implant, Ø2.5mm	MI-2513
15mm	13mm	Mini Implant, Ø2.5mm	MI-2515

Note: The packages do not include the metal box with o'ring which can be ordered separately

MINI IMPLANT PROSTHETIC

HEALING SCREW

Product Description

Healing Screw

Code

MI-HA



MI-HA

ABUTMENT

Product Description

Straight Abutment

15° Angled Abutment

Code

MI-SA

MI-AA15



MI-SA



MI-AA15

HOUSING & O-RING

Product Description

Housing with O-Ring

O-Ring packages 10 pcs

Code

MI-MHC

MI-OR10



MI-MHC



MI-OR

TRANSFER

Product Description

Transfer/Abutment

Code

MI-TR



MI-TR

MINI IMPLANT PROSTHETIC

ANALOG



MI-A

Product Description

Analog

Code

MI-A

SCAN BODY



MI-SB

Product Description

Scan Body

Code

MI-SB

TITANIUM LINK



MI-TIBASE

Product Description

Titanium Link

Code

MI-TIBASE

CASTABLE



MI-PC

Product Description

Castable Abutment

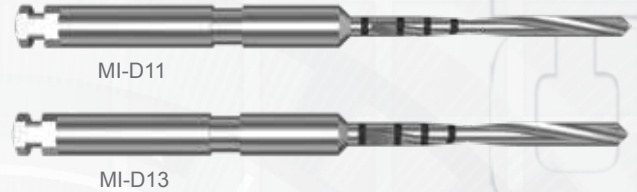
Code

MI-PC

MINI IMPLANT INSTRUMENTS

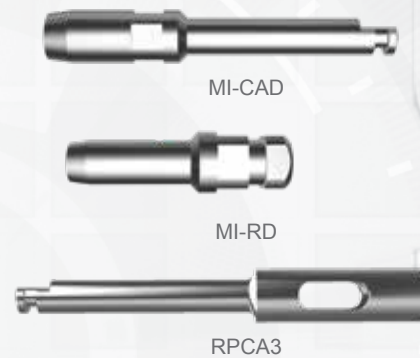
DRILLS

Product Description	Code
Drill 1.1mm	MI-D11
Drill 1.3mm	MI-D13



DRILLS & CIRCULAR SCALPEL

Product Description	Code
Contrangle Drill	MI-CAD
Ratchet Drill	MI-RD
Contra-Angle Circular Scalpel Ø 3mm	RPCA3



RATCHET

Product Description	Code
Surgical Ratchet	SRW
Standard 4x4mm connection adapter	UNACR4



TORQUE-LOCK

Product Description	Code
Torque-Lock 10-40 Ncm	CTL-1040

The lightweight titanium design is easy to use as an adjustable torque wrench or ratchet. Quickly disassembles for cleaning. No calibration required. Sold with standard 4x4 adapter 4x4



SURGICAL BOX

Product Description	Code
Surgical Box	MI-SK



 **INTRA-LOCK**[®]
SYSTEM EUROPA



Intra-Lock System Europa S.r.l.[®]
Via Ottavio Bottigliero, 1
phone + 39 089 233045
84126 Salerno (SA) - Italy
info@intra-lock.it • www.intra-lock.it

 0425